





Since its inception in 1962, Stream-Flo Industries Ltd. has been a leader and innovator in the oilfield sector. Stream-Flo's first check valves were perfected and marketed in response to a need for high quality products made to perform and endure in the most demanding environments.

Stream-Flo continues to be a world industry leader through continuous product development, backed by professional engineers, designers and technicians. Together, they develop, design and produce leading-edge solutions and quality products to make Stream-Flo Industries Ltd. an internationally recognized leader in the check valve industry.

## Check Valve Designs



### CROWN Swing Check Valves

- simple, dependable design
- full bore for passage of pigs
- butt weld, raised face and RTJ ends
- wide range of options and accessories

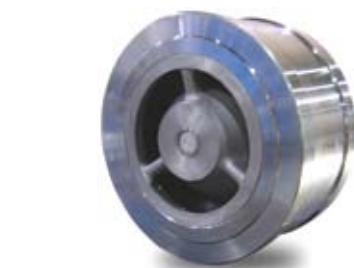


### CROWN Piston Check Valves

- axial flow
- raised face and RTJ ends
- simple, dependable design
- available for vertical flow-up or down service

### CROWN Wafer Check Valves

- economical
- space-saving design
- suitable for vertical flow-up service
- clapper opens in downstream piping



### CROWN Wafer Nozzle Check Valves

- non-slam
- axial flow
- low pressure drop
- space-saving design
- available for vertical flow-up or down service

### CROWN-EUROPA Nozzle Check Valves

- non-slam
- axial flow
- low maintenance costs
- provides energy savings due to low pressure drops
- sizes up to 60" available



# Valve Systems

## Check Valve Accessories

### Actuated Check Valves



- lock open levers
- worm gear operators
- handwheel extensions
- pneumatic, hydraulic and electric actuators

### Subsea Check Valves



- ROV interfaces
- lock open levers
- worm gear operators
- various gland designs



position indicator



proximity switch



pneumatic/hydraulic/electric actuator



slam retarder



lock open lever



ROV interface



counter weight



worm gear operator



### BASIC SPECIFICATIONS

#### Sizes:

- 1/2" - 48"

#### Pressure Ratings:

- Class 150 to 2500
- 2000 to 10,000 psi

#### Body Materials, including:

- ductile iron
- carbon steel
- stainless steel
- duplex steel
- high nickel alloys

#### Specification Compliances:

- ISO 9001
- CSA Z245.15
- API 6A, 6D and Q1
- ASME B16.34

#### Temperature:

- -75°F to +650°F & higher

#### Options:

- removable seat
- conduit clapper
- weld overlay
- exotic seals
- fire-safe designs

#### APPLICATIONS

- oil and gas pipelines
- field gathering systems
- wellhead injection lines
- gas export facilities
- product tank farms
- pulp and paper mills
- mining
- chemical processing
- gas storage caverns
- power generation



**Head Office and  
Manufacturing Facility**

4505 - 74 Avenue  
Edmonton Alberta Canada T6B 2H5  
Tel 780.468.6789  
Fax 780.469.7724

**Canadian Sales**

400 Bow Valley Square One  
202 - 6 Avenue SW  
Calgary Alberta Canada T2P 2R9  
Tel 403.269.5531  
Fax 403.266.3307

**Canadian Sales, Service  
& Distribution Centres**

Brooks AB	403.362.7600
Edson AB	780.712.5505
Estevan SK	306.634.4719
Fort McMurray AB	780.743.0744
Fort Nelson BC	250.775.6789
Fort St. John BC	250.785.9500
Grande Prairie AB	780.532.1433
Rainbow Lake AB	780.956.3655
Red Deer AB	403.346.2550
Slave Lake AB	780.849.6100

**International Sales**

Houston Texas USA	832.912.1022
Kilgore Texas USA	903.983.2992
Granbury Texas USA	817.573.8015
Beeville Texas USA	361.375.2400
Indiana Pennsylvania USA	724.349.6090
Jakarta Indonesia	62.21.7918.1234
Dubai UAE	971.4.870.4012
Abu Dhabi UAE	971.2.676.0130
Hassi Messaoud Algeria	213.29.738.910
United Kingdom	353.87.798.3582

**[www.streamflo.com](http://www.streamflo.com)  
[info@streamflo.com](mailto:info@streamflo.com)**